

WTC Dubai



Elevate
Beyond

Boundaries

At WTCA, we unite buildings and business innovators to shape the future of global commerce, unlocking unique advantages in real estate and beyond. Prepare to propel your business into a network that transcends borders and drives global success.

REAL ESTATE SERVICES

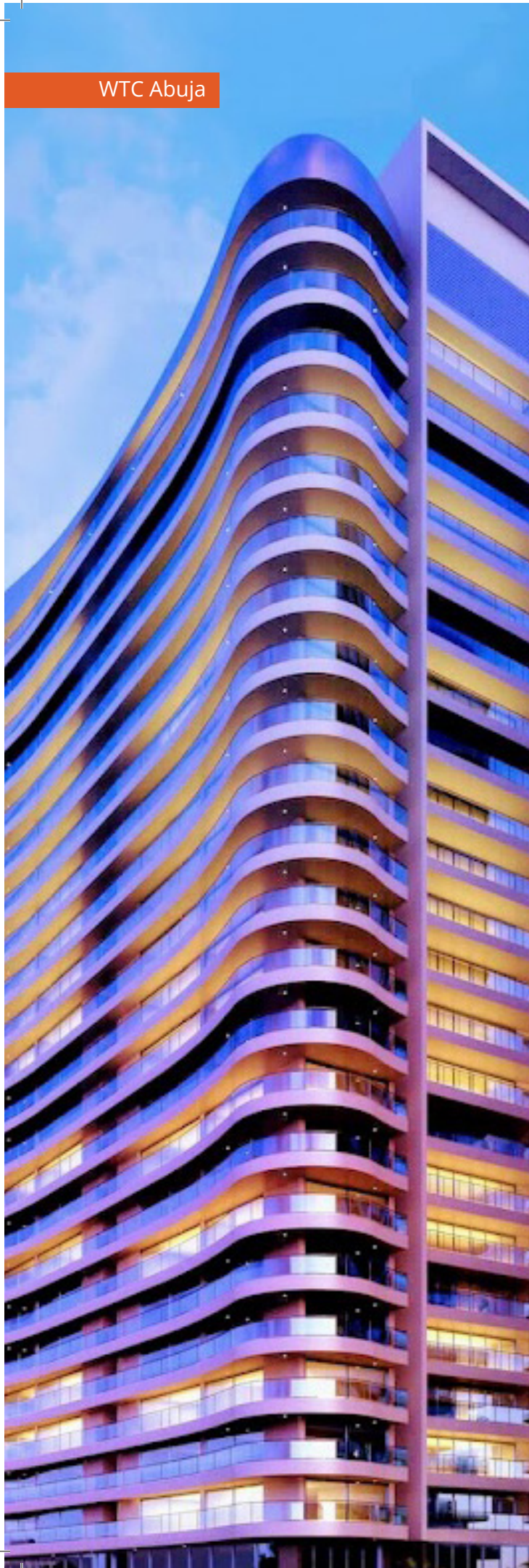


**WORLD TRADE CENTERS
ASSOCIATION**

CONNECTING BUSINESSES, GLOBALLY.

VISIT US AT WWW.WTCA.ORG
EMAIL US AT INFO@WTCA.ORG

WTC Abuja



“The World Trade Center brand contributes up to 50% higher rents than equivalent local office space and is estimated to have a value of around 2.5 million Euros over a ten-year period.”

- Mehran Eftekhari, Director, WTC Cyprus

STAND OUT AND RISE ABOVE

In the realm of global commerce, some symbols need no introduction. Behold the World Trade Center (WTC®) emblem – a commanding beacon of unrivaled influence.

Every curve and line of the emblem acts as a herald, announcing the power and influence housed within. Its radiance transcends borders, cultures, and industries — and it is yours to embrace.

Are you ready to seize the opportunity for global success through a WTC license and grace your development with the esteemed symbol of excellence?

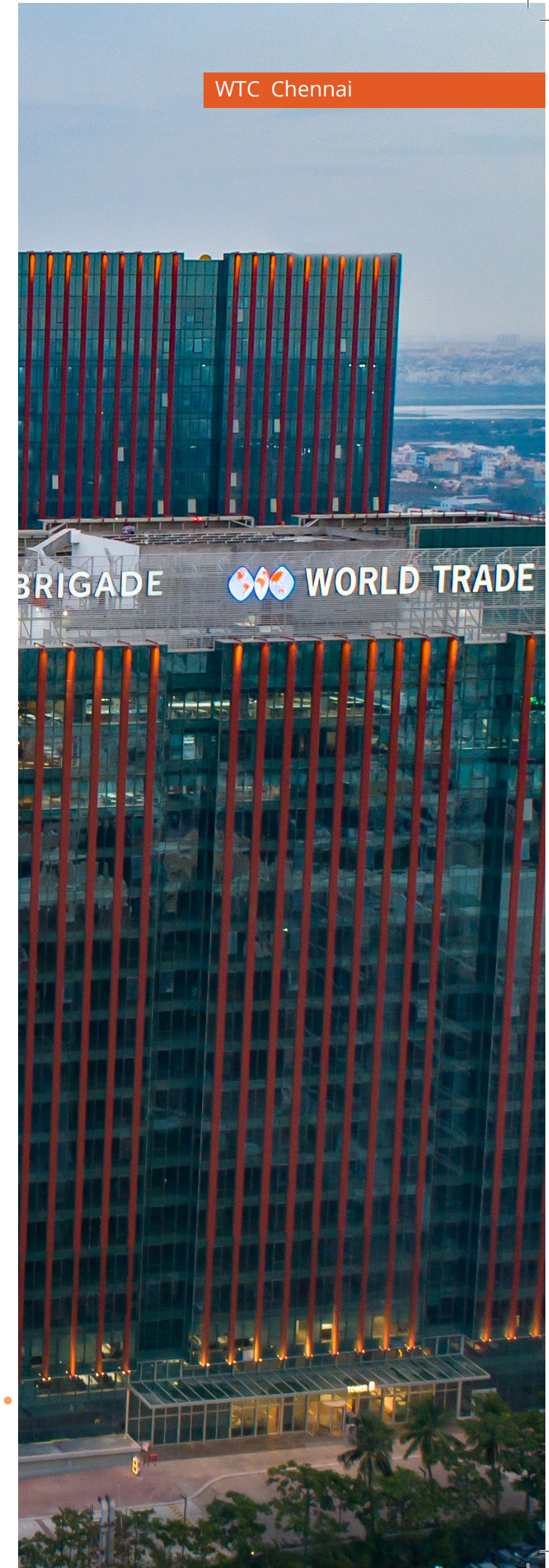
WTC® REAL ESTATE: IT'S MORE THAN BUILDINGS

Experience the pinnacle of global commerce with WTCA. Spanning over 300 WTC locations across nearly 90+ countries, WTCA is the premier architect of success on a global scale. An investment in a WTC license elevates your business address to a symbol of unmatched global prominence.

Our WTC buildings are not just structures; they embody a collective force of business innovators, transcending boundaries of geography, language, and culture. With WTCA membership, you're not just constructing locations, you're building connections, momentum, and global impact. You're forming bridges and expanding horizons.

Connect globally, thrive locally, and stand tall in the world of real estate - this is the transformative power of WTCA. Accept your invitation to go beyond boundaries and forge the future.

WTC Chennai



WTC Rotterdam



WHERE PRESTIGE MEETS PROFIT

At the core of every successful company lies a network of human relationships. That's what elevates WTCA to its world-renowned status. Through our unparalleled advantages, we help businesses make connections – across the hallway and across the globe.

CONNECTION:

Globally connected network of peers and partners, plus tools to create new business relationships and increase reach across industries and locations.

MARQUEE STANDING:

WTCA's prestigious trademark brings authoritative name recognition and an instantly distinguished reputation to any building.

CREDIBILITY:

Membership helps raise the profile of organizations and provides a brand image differentiator.

HIGHER REVENUES:

The WTC brand can drive more international transactions, and faster – leading to lower vacancy rates, higher rents, and higher profile tenants.

BUSINESS CATALYST:

Access to contacts and services helps open doors for new collaboration, information, and growth opportunities.

NEUTRAL POSITIONING:

As a non-profit, WTCA can support organizations regardless of political affiliation, local restrictions, or intergovernmental activity.

The WTCA ecosystem doesn't just grow companies; it expands entire economies, sparking innovation, making the unimaginable achievable, and sculpting the future. Welcome to our family, where business isn't all business; it's personal.

"The WTCA is more than buildings — it's about constructing pathways for local companies to enter diverse markets globally and vice versa. A gateway to the world."

- Brian Wesley Kirton, Executive Director, WTC Georgetown

WTC Cairo



"Bouwinvest is owner of two prominent WTC locations in the Netherlands—WTC Rotterdam, a founding WTC member, and WTC The Hague. The WTC label significantly enhances the allure of both buildings, reflecting their high-quality, multi-tenant complexes which in turn attract a diverse array of tenants."

- Jan Willem-Kos, Senior Asset Manager at Bouwinvest and Chairman of WTC-NL

ELEVATE YOUR REAL ESTATE INVESTMENT

WTC-branded real estate offers more than physical space; it can place you at the forefront of a global movement, providing a unique set of advantages that can help drive recognition and sustained value in the competitive world of real estate.

- **Attract prestigious tenants**, including multinational corporations and financial institutions
- **Command premium rent** due to prestigious and global recognition
- **Lease out faster** and maintain high occupancy rates
- Receive **city development initiatives** for enhanced aesthetics and infrastructure
- Gain a competitive advantage via global connectivity, prestige, and **networking opportunities**
- Enjoy **enhanced marketability** resulting from an esteemed business address

Drive success and profitability as part of the WTCA global collaborative network.

WTC Dresden



BEYOND ARCHITECTURE

Embrace the Global Reach of WTCA's Network

Our strength lies not only in iconic locations but in the rich tapestry of businesses and organizations that call WTCA home. As a WTC License Holder, you gain access to a dynamic global network comprising a diverse ecosystem of economic development agencies, real estate developers, universities, logistical hubs, airports, special economic zones, and more.

Airports



Operating
WTC Schiphol Airport

Operating
WTC Malpensa Airport

Ports



Operating
WTC Barcelona

Operating
WTC Buenos Aires

Operating
WTC Trieste

Our network transcends traditional boundaries, connecting you to a world of opportunities beyond just real estate. Whether you're seeking collaboration with economic development agencies to navigate regulatory landscapes, partnering with universities to foster innovation, or leveraging logistical hubs and airports for streamlined global operations, the WTCA ecosystem empowers you to realize your full potential on a global scale.

Special Economic Zones



Operating
WTC Montevideo

Operating
Dubai WTC

Under Construction
WTC Haikou

Convention and Exhibition Centers



Operating
WTC Taipei

Operating
WTC Istanbul

Operating
WTC Metro Manila

EMBRACE THE WORLD

Join WTCA to Unlock Connections, Growth, and Global Success

APPLICATION PROCESS

REGISTER

Your Interest



Complete an Expression of Interest form

<http://join.wtca.org/eoi>

PREPARE

Submit Your Application



Approval by

WTCA

Executive

Committee

JOIN

The WTCA Network



One-time

License

Initiation Fee +

Annual Dues

"WTC Asunción became a Paraguayan icon, which captured the attention of international investors, acting as a catalyst for the development of the financial and business center in Asunción."

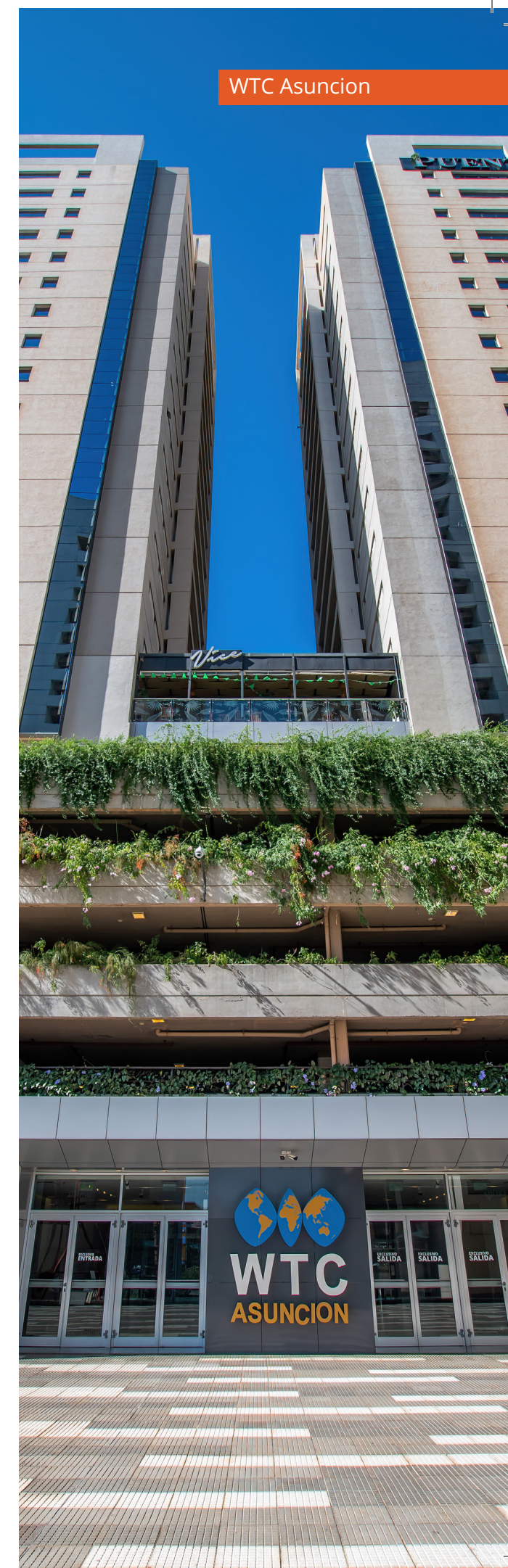
-Olimpio Fleytas, General Manager, WTC Asunción

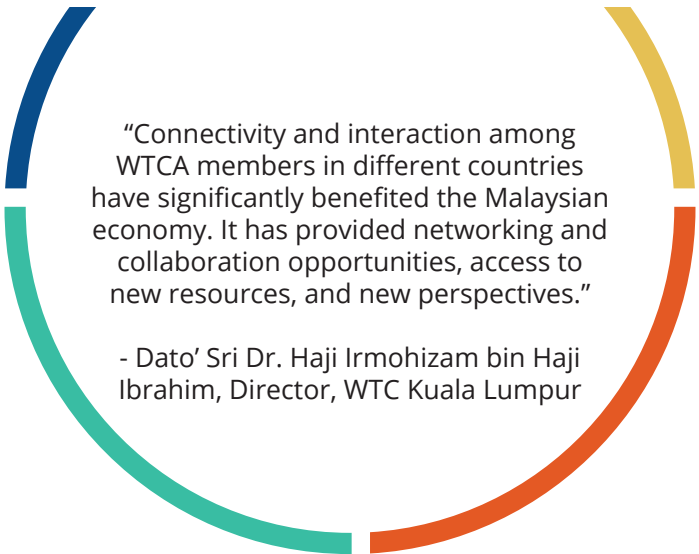
REDEFINE YOUR GLOBAL SKYLINE

For more than 50 years, the WTC brand has offered once-in-a-lifetime opportunities. This isn't just about location. As the exclusive WTC License Holder in your community, you command center stage in the international business arena.

Join the quest to dream bigger, push boundaries, and create a world where business is not only about financial success but also about making a positive impact.

Contact us to explore the prestige of becoming a WTC License Holder and place yourself at the very center of inspiration and innovation.





“Connectivity and interaction among WTCA members in different countries have significantly benefited the Malaysian economy. It has provided networking and collaboration opportunities, access to new resources, and new perspectives.”

- Dato’ Sri Dr. Haji Irmohizam bin Haji Ibrahim, Director, WTC Kuala Lumpur



LINKEDIN



YOUTUBE



FACEBOOK



TWITTER/X

Visit us at www.wtca.org or contact us at info@wtca.org



WTC Gibraltar

WORLD TRADE CENTER GIBRALTAR

May 2024